

FHWA UPDATE

**2012 NEBPP Meeting, NewPort, RI
September 17, 2012**



**Anwar S. Ahmad, P.E.
Bridge Preservation Engineer
Federal Highway Administration**

National Bridge Preservation Initiatives



- **FHWA**
 - Bridge Management Peer Exchanges
 - Establishment of the BPETG
 - National Bridge Management Conference 2011



- **AASHTO**
 - TSP-2 Bridge Preservation Expansion
 - SCOBs, T-9 Bridge Preservation Committee
 - SCOM, Bridge Technical Working Group

- **TRB**

- TRB, AHD-00 Bridge Preservation Committee
- TRB, AHD-30 Structure Maintenance Committee
- TRB, Bridge Preservation & Durability ETG



- **ARTBA**

- Bridge Action Team



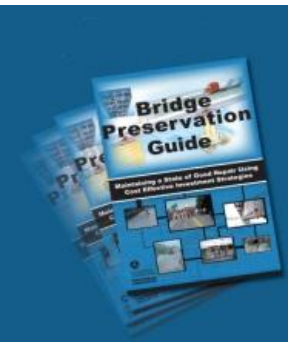
FHWA BP ETG Accomplishments Year 1 (2011)



- Developed a Dynamic Strategic Plan with 9 Objectives, Actions, Deliverables and Time lines (Will be continually updated)

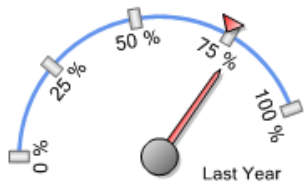


- Reached Consensus on a Bridge Preservation Definition which has been adopted by AASHTO and Industry



- Contributed to the recently published FHWA bridge preservation guide.

FHWA BP ETG Accomplishments Year 1 (2011)



- Developed a paper on bridge preservation related performance measures
- Developed a bridge preservation specific web search engine that is been hosted on the TSP.2 website
- Developed a vision for the Bridge Preservation Tool Box



FHWA BP ETG Plan Year (2012)

- Initiate work for the development and Implementation of the bridge preservation tool box
- Develop a white paper and a work plan for implementing existing & new and innovative Products
- Develop Communications & Outreach Plan
- Development of first three Pocket Guides (cleaning, sealing, coatings)
- Update the Bridge Preservation Research Roadmap

BRIDGE PRESERVATION TOOL BOX



Bridge Preservation



FHWA > Bridge > Asset Management > Bridge Preservation Toolbox



Legislations & Policies

- Federal, State, and Local Laws and Bridge Preservation Related Policies;
- Definitions/Terminology;
- Guides; etc.,
- [Agencies' Websites](#)

Bridge Management

- Condition Assessments;
- Performance Measures;
- Strategies;
- Cost Data;
- Deterioration Trends;
- Life Cycle Cost Analysis; etc.

Email Notification

Enter your E-mail

Submit

Events

- [Southeast Bridge Preservation Partnership Annual Meeting](#)
Atlanta, Georgia
April 23 - 25, 2012

[View all Upcoming Events](#)

More Information

- [Asset Management](#)
- [Bridge Technology](#)

Contact

- **Anwar Ahmad**
[Office of Bridge Technology](#)
202-366-8501
[E-mail Anwar](#)

Research & Development

- Research Roadmap;
- Libraries;
- Product Evaluations;
- Standards & Specifications;
- Technical Presentations;
- Training; etc.

Bridge Preservation Treatments

- Coatings;
- Sealers;
- Overlays;
- Drainage Systems;
- Scour Remediation;
- Cathodic Protections & Preventions;
- Electrochemical Chloride Extractions; etc.

Other On-going FHWA Initiatives

- Develop a guide for bridge preservation performance measures
- Update NHI bridge maintenance course (4 ½ days)
- Develop a new NHI bridge preservation course (1-day)
- Develop a new NHI performance based management of highway bridges course (1-day)
- Conduct Bridge Management and Preservation Peer Exchanges
- Develop a bridge preservation web-based training for contractors and construction personnel (sealing/water proofing; coatings; safety practices)
- Implement Element Level Inspections

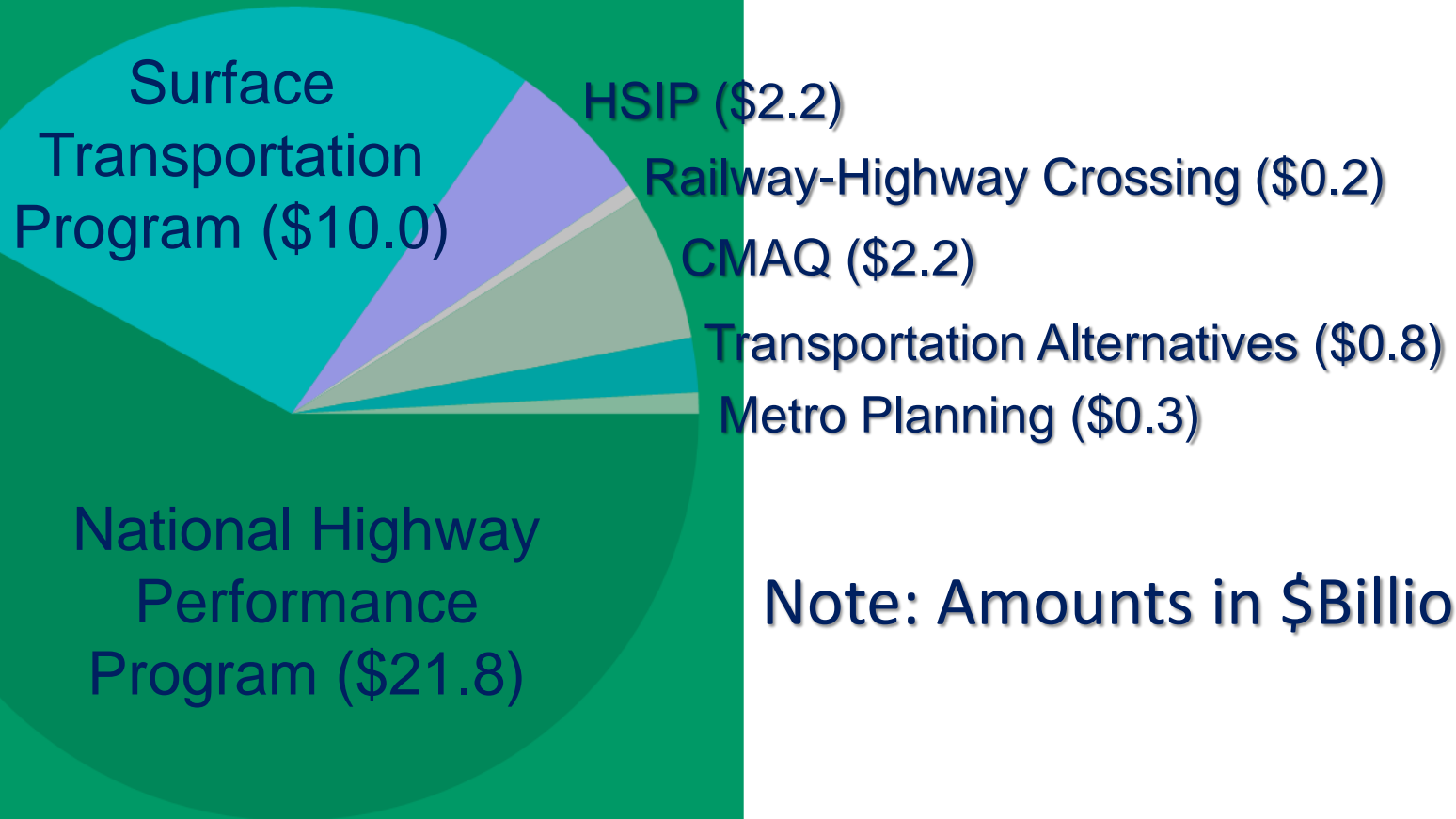
MAP-21 FOR BRIDGES

- SAFETEA-LU expired on 9/30/09
 - 10 extensions (final one from 7/1/12 - 7/6/12)
- MAP-21 Signed by President July 6, 2012
- 2 year Bill (FY2013 & FY2014)
- Many provisions take affect on October 1st, 2012
- Avg. annual funding at FY12 levels (plus minor inflation)

MAP-21 FOR BRIDGES

- **Two year bill**
 - \$37.5 billion in 2013
 - \$37.8 billion in 2014
- **Four main programs (there are more)**
 - National Highway Performance Program
 - Surface Transportation Program
 - Highway Safety Improvement Program
 - Congestion Mitigation and Air Quality Improvement Program

\$37.7 Billion/Year in Formula Funding



Note: Amounts in \$Billion

MAP-21 FOR BRIDGES

National Highway Performance Program (NHPP)

- Funds an enhanced National Highway System, combining functions of the existing NHS, IM and Bridge Programs
- Enhanced NHS includes existing NHS, all principal arterials, STRAHNET, and intermodal connectors
- Requires an asset management plan
- States set targets for conditions and performance
- Min. standards for Interstate & bridge conditions in a State
 - DOT to set minimum standard for Interstate pavement condition
 - Law sets standard for NHS bridges -- no more than 10% of deck area may be structurally deficient

MAP-21 FOR BRIDGES and Tunnels

- National Highway Performance Program (SEC 1106)
 - Eligible facility = any facility on the NHS
 - Eligible project = supports the national performance goals and meets at least one listed purpose
 - Performance targets for the NHS set by state as part of an asset management plan
 - Risk and performance based
 - In line with national goals, specified in law (SEC 1203)

MAP-21 FOR BRIDGES

- **National Highway Performance Program**
 - Timing of actions
 - 18 months after October 1st – USDOT Secretary to issue regulations defining the process for developing an asset management plan
 - 18 month transition period beyond publication of final rule

MAP-21 FOR BRIDGES

- **Surface Transportation Program**

- Includes bridges and tunnels on public roads of all functional classifications
- Eligible - construction, replacement, rehabilitation, preservation, protection, inspection, evaluation, inspector training
- 15% of 2009 Highway Bridge Program apportionment set aside for bridges not on Federal-aid highways (waiver still allowed)

MAP-21 FOR BRIDGES

- **Surface Transportation Program (Continued)**
 - Continued flexible funding for Federal-aid highways, plus safety and bridges on any public road
 - Eligibility for transportation enhancements, rec trails, ferry boats, consolidated broader infrastructure program, truck parking facilities, and safe routes for schools (no set-aside)
 - 50% of funds subject to allocation based on population
 - Rural provision enhanced
 - Rural planning organization, if any, must be consolidated
 - Up to 15% of rural sub allocation may be spent on minor collectors

MAP-21 FOR BRIDGES

- **National Bridge and Tunnel Inventory and Inspection Standards Program**
 - Congress determined that it is in the vital interest of the U.S. to use performance based bridge management systems
 - Need to establish tunnel inspection standards and inventory
 - Need to revisit Sufficiency Rating – consider emergency and freight mobility

MAP-21 FOR BRIDGES

- **National Bridge and Tunnel Inventory and Inspection Standards Program (Continued)**
 - Classify bridges according to serviceability, safety, and essentiality for public use, including the potential impacts to emergency evacuation routes and to regional and national freight and passenger mobility if the serviceability of the bridge is restricted or diminished;
 - Based on that classification, assign each a risk-based priority for systematic preventative maintenance, replacement, or rehabilitation; and

MAP-21 FOR BRIDGES

- **National Bridge and Tunnel Inventory and Inspection Standards Program (Continued)**
 - Determine the cost of replacing each structurally deficient bridge
 - Element level data:
 - Issue guidance and begin collecting w/in 2 years of enactment
 - Study cost-effectiveness, benefits, feasibility of collecting for non-NHS bridges

MAP-21 FOR BRIDGES

- **National Bridge and Tunnel Inventory and Inspection Standards Program (Continued)**
 - Update the National Bridge Inspection Standards within 3 years
 - National inspector certification process
 - Establish procedures for reporting critical findings
 - Risk-based approach to setting inspection intervals
 - Annual compliance process and penalty (both bridges and tunnels)
 - Develop training program for tunnel inspectors

MAP-21 FOR BRIDGES

- **National Goals and Performance Management Measures**
 - 7 national goal areas defined in law
 - Infrastructure condition – maintain a state of good repair
 - 18 months after enactment – rulemaking to *“establish performance measures and standards.”*
 - 12 months after the rule, states set their targets

MAP-21 FOR BRIDGES

- **National Goals and Performance Management Measures (Continued)**
 - For bridges, limited to standards and measures for bridge conditions on the NHS
- 4 years after enactment and biennially thereafter, states report on conditions and progress
- More information on MAP-21 can be found at <http://www.fhwa.dot.gov/map21/>



Thank you!

Anwar S. Ahmad, P.E.

Bridge Preservation Engineer

Federal Highway Administration

Telephone: (202) 366-8501

Email: Anwar.Ahmad@dot.gov